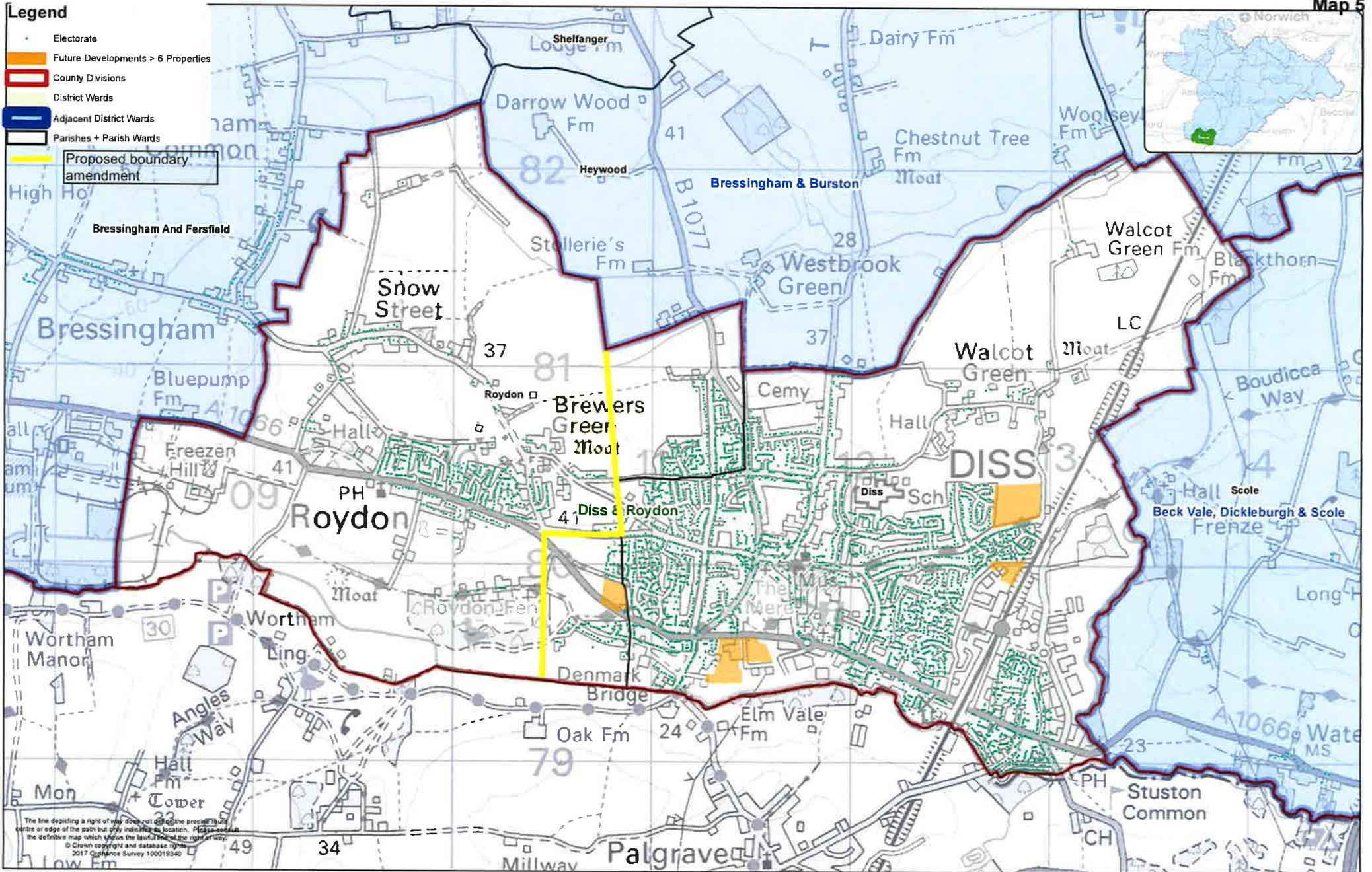


- Legend**
- Electorate
 - Future Developments > 6 Properties
 - County Divisions
 - District Wards
 - Adjacent District Wards
 - Parishes + Parish Wards
 - Proposed boundary amendment



The line depicting a right of way does not define the precise 'built centre or edge of the path but only indicates its location. Please consult the definitive map which shows the lawful line of the right of way.
© Crown copyright and database right. 2017 Ordnance Survey 100019340



South Norfolk District Council Parish Boundary Consultation
 Parishes grouped by District Ward:
Diss & Roydon

Date created:
23/03/2017
 Scale @ A3:
1:16,780

