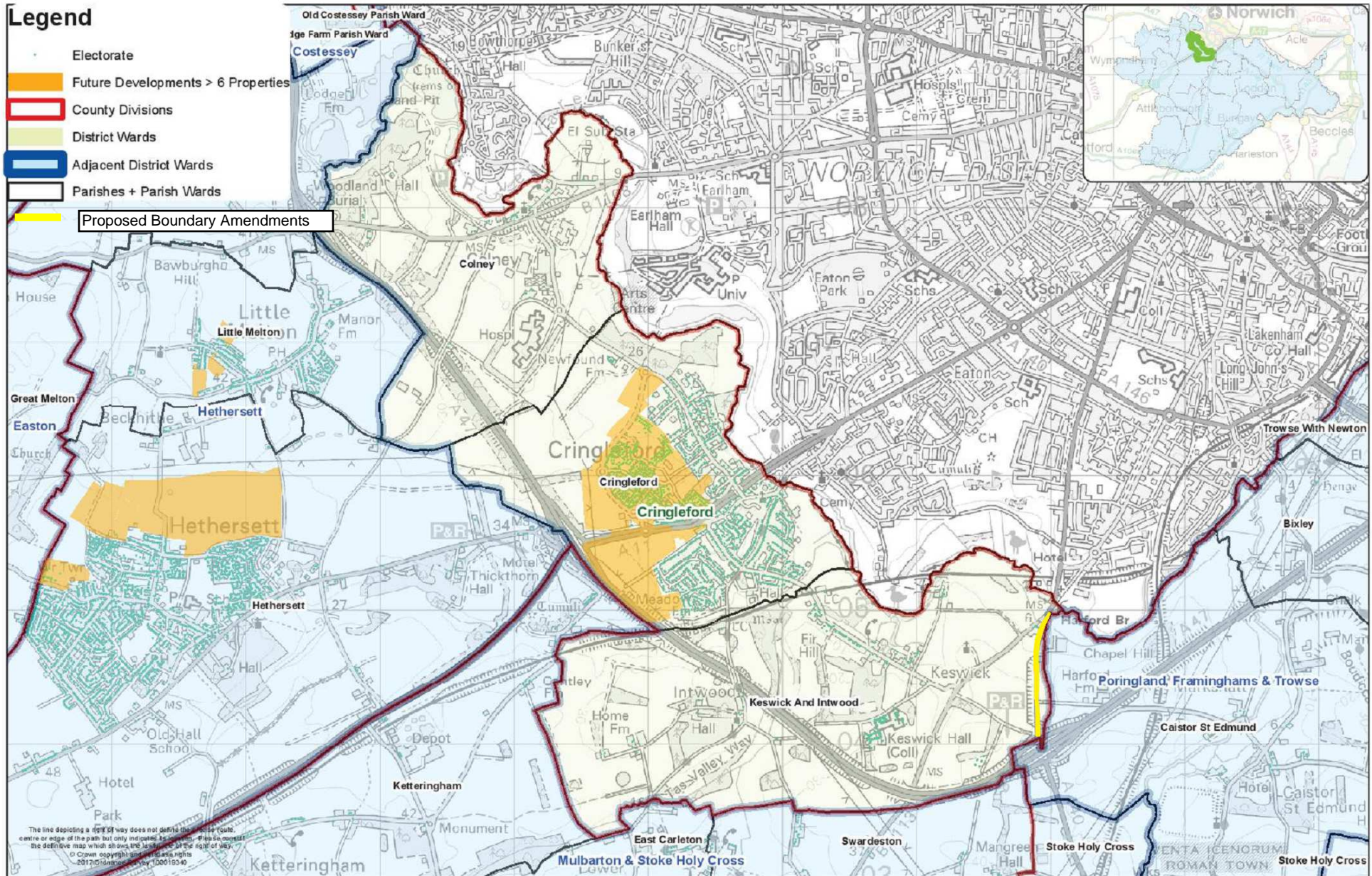


Legend

- Electorate
- Future Developments > 6 Properties
- County Divisions
- District Wards
- Adjacent District Wards
- Parishes + Parish Wards
- Proposed Boundary Amendments



The line depicting a right of way does not define the centre or edge of the path but only indicates its location. Please consult the definitive map which shows the limits of the right of way.
 © Crown copyright and database rights 2017 Ordnance Survey 100015046



South Norfolk District Council Parish Boundary Consultation Parishes grouped by District Ward: **Cringleford**

Date created:
22/03/2017
 Scale @ A3:
1:24,970

